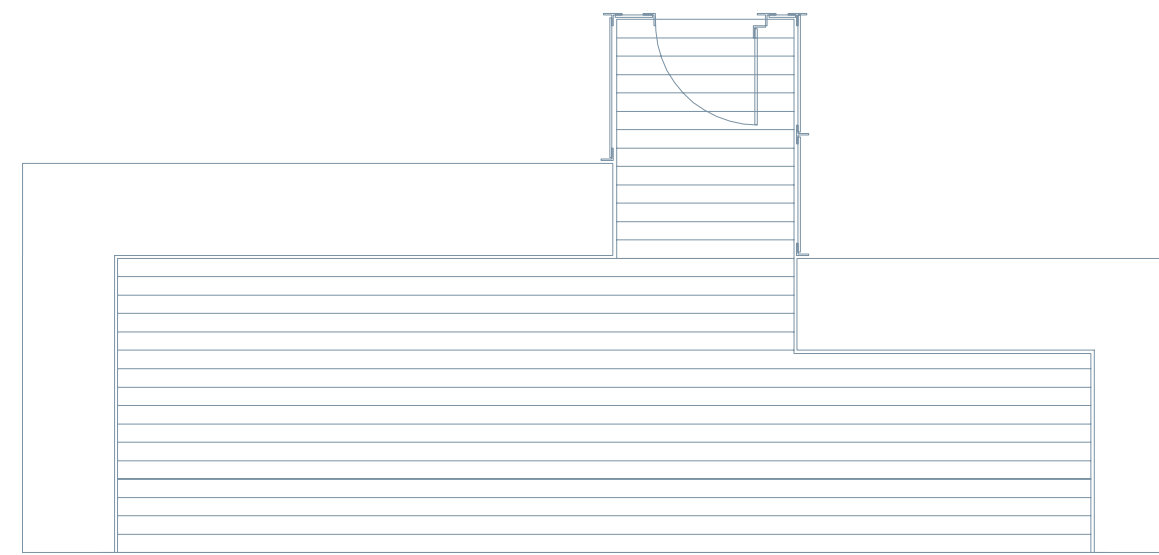
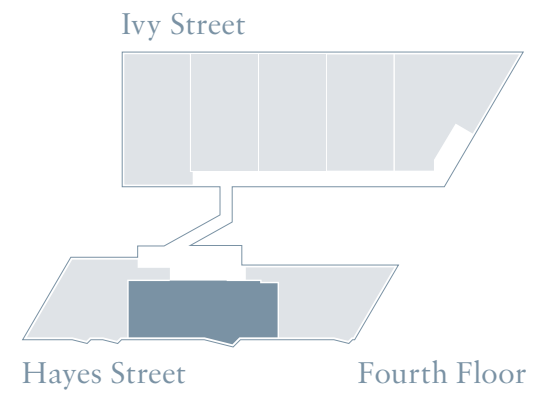


RESIDENCE FEATURES:

- 7.5"-wide Austrian oak plank flooring
- Custom SieMatic kitchen cabinets in Lotus White and solid quartz countertops
- Fully integrated Liebherr refrigerator and Bosch appliances
- Carrara marble honed mosaic floors by Specstones
- Newbury Metro Collection freestanding tub

450 HAYES

450 Hayes Street, San Francisco, CA 94102
 T 415 552 5800
 info@450hayes.com
 450hayes.com

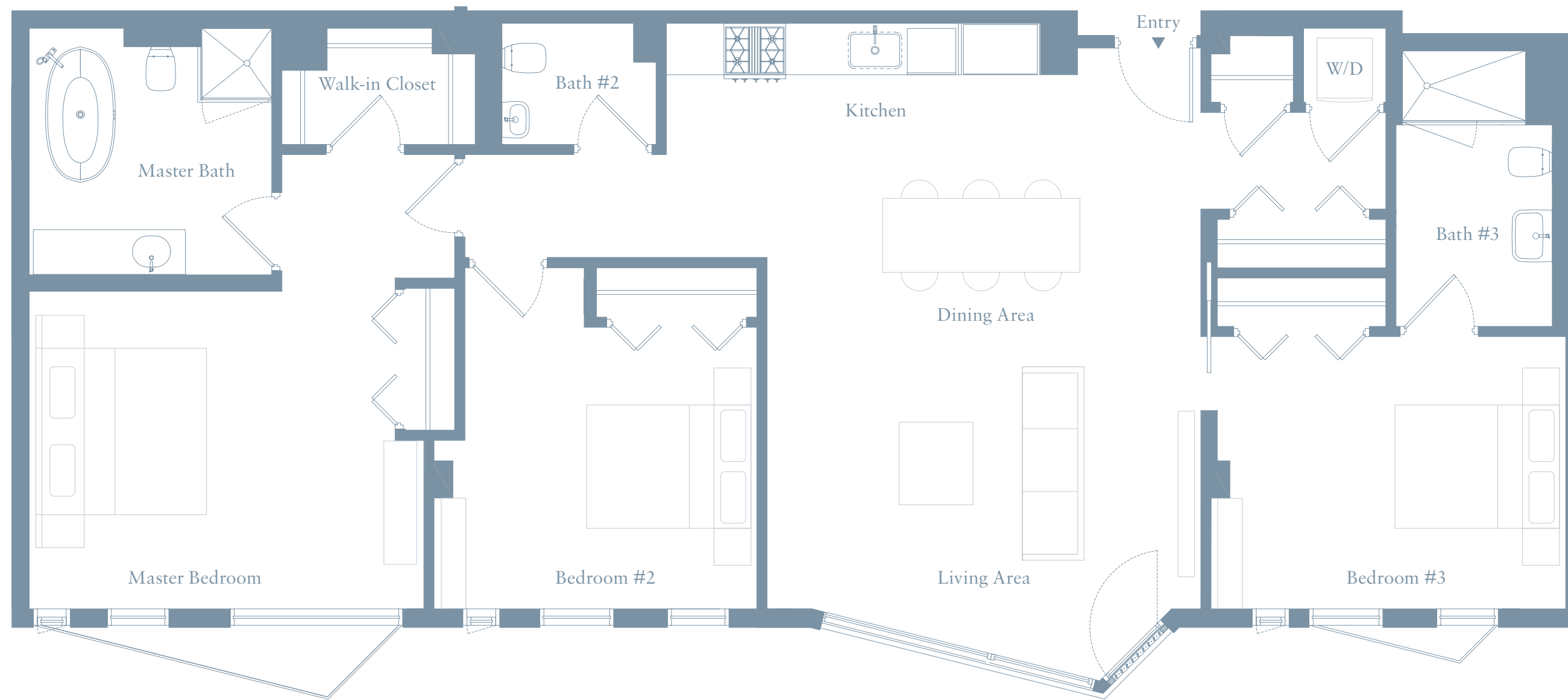


Private roof deck



PH7

3 Bedrooms
 2.5 Baths
 Interior: Approximately 1,463 sq ft
 Exterior: Approximately 224 sq ft



EXCLUSIVELY REPRESENTED BY THE MARK COMPANY
 The developer reserves the right to make modifications in materials, pricing, specifications, plans, designs, scheduling and delivery of the homes without prior notice. Dimensions and square footages included in marketing materials and/or project documents may vary and are approximate and may be more or less than actual size. The developer reserves the right to make modifications to the floor plans and residence dimensions at any time without notice. Floor plans are not drawn to scale. This is not an offer to sell, but is intended for information only. CalBRE#01527205. Equal Housing Opportunity

Private roof decks, as shown, are not accessible directly from the unit and must be accessed via a common stairwell.