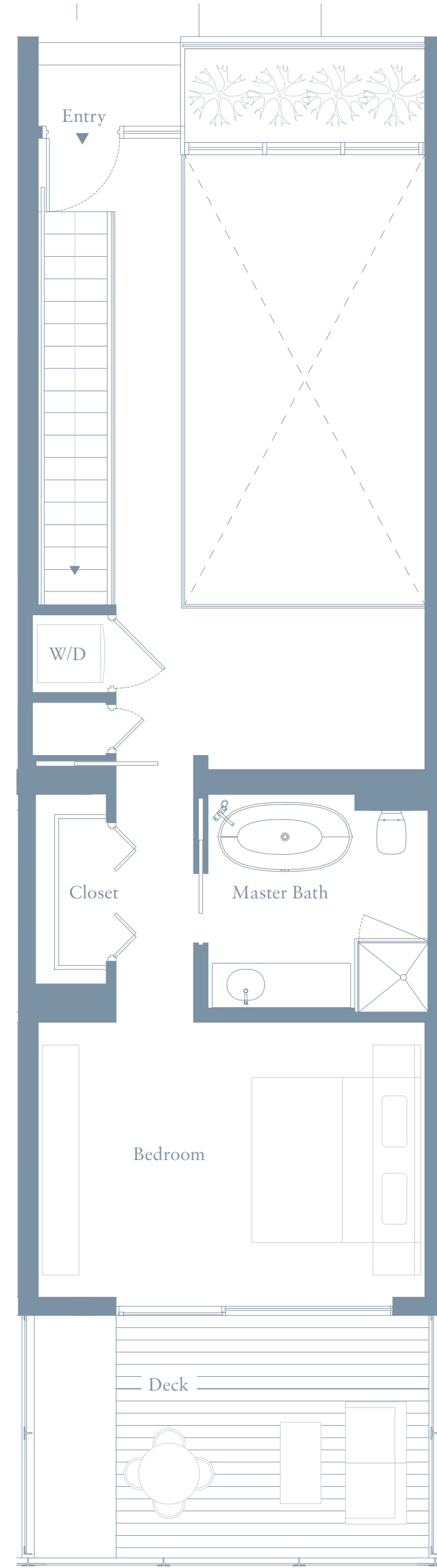
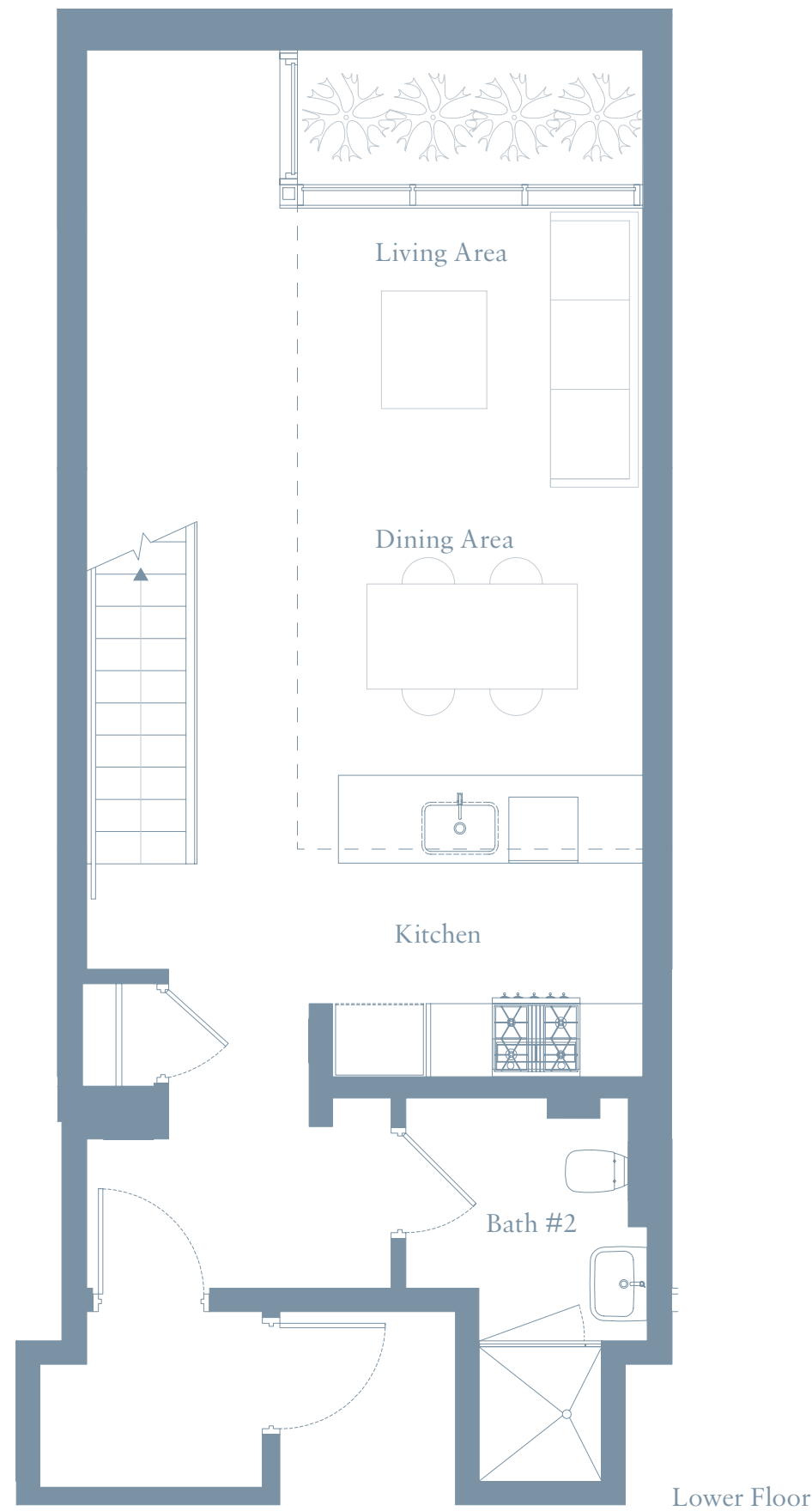
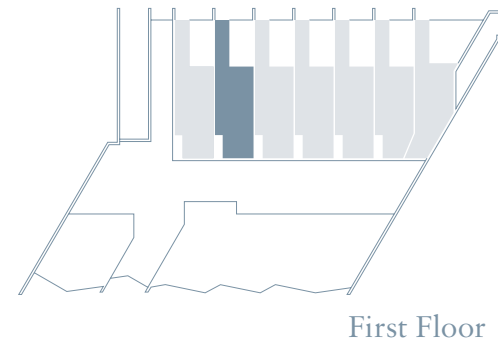
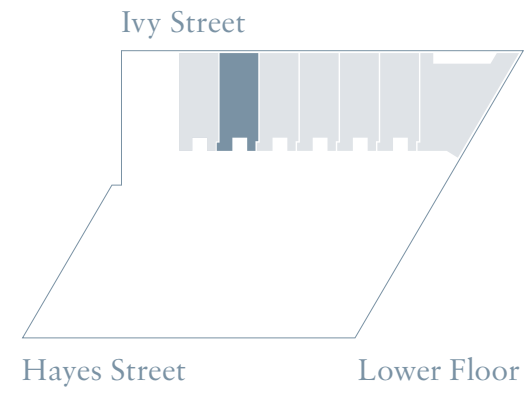


RESIDENCE FEATURES:

- 25' ceiling height in living and dining areas
- 7.5"-wide Austrian oak plank flooring
- Custom SieMatic kitchen cabinets in Lotus White and solid quartz countertops
- Fully integrated Liebherr refrigerator and Bosch appliances
- Carrara marble honed mosaic floors by Specstones
- Newbury Metro Collection freestanding tub

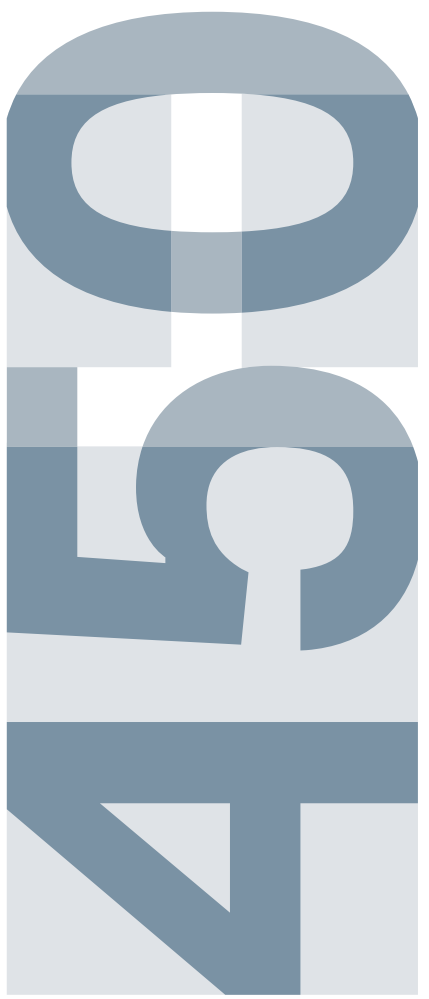
450 HAYES

450 Hayes Street, San Francisco, CA 94102
 T 415 552 5800
 info@450hayes.com
 450hayes.com



TH2

1 Bedroom
 2 Baths
 Interior: Approximately 1,132 sq ft
 Exterior: Approximately 159 sq ft



EXCLUSIVELY REPRESENTED BY THE MARK COMPANY
 The developer reserves the right to make modifications in materials, pricing, specifications, plans, designs, scheduling and delivery of the homes without prior notice. All dimensions are approximate and subject to normal construction variances and tolerances. Plans and dimensions may contain minor variations from floor to floor. We reserve the right to make changes in accordance with the applicable offering plan. This is not an offer to sell, but is intended for information only. CalBRE#01527205
 Equal Housing Opportunity