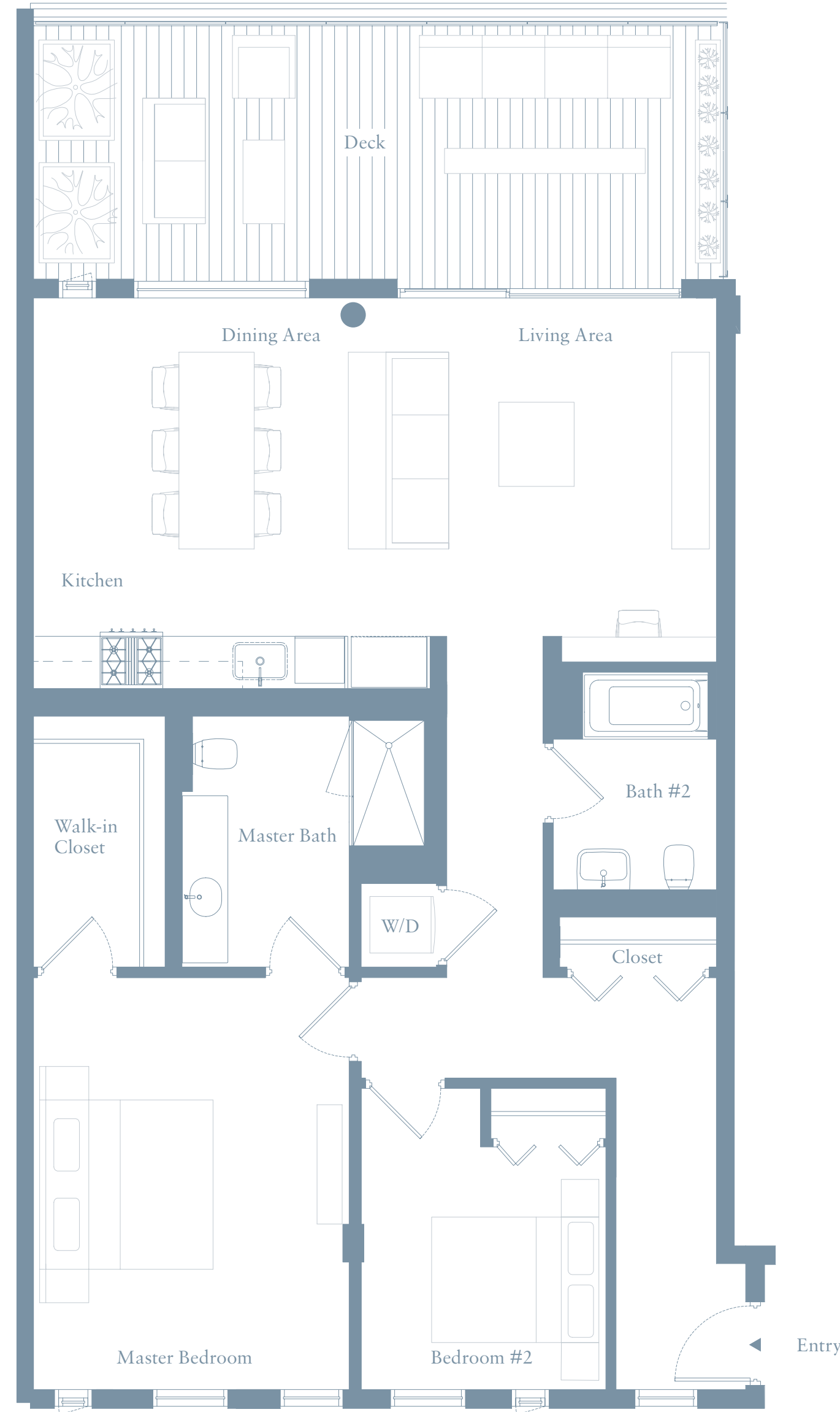
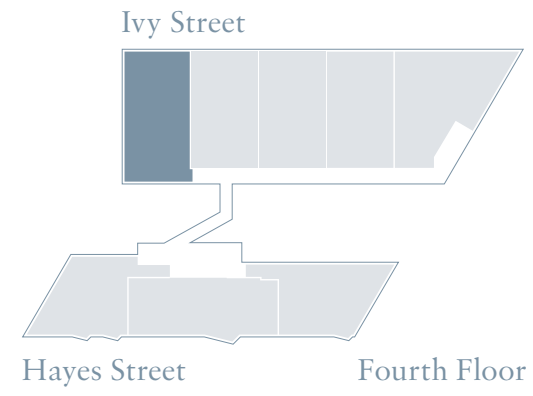


RESIDENCE FEATURES:

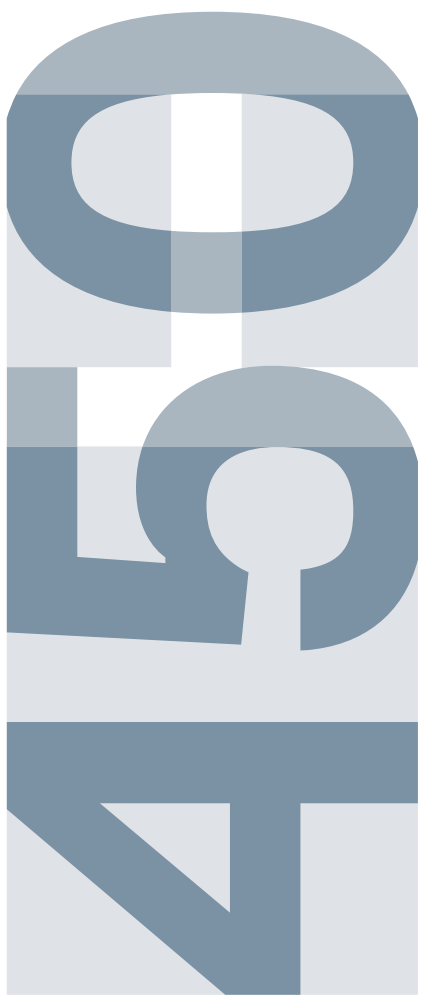
- 7.5"-wide Austrian oak plank flooring
- Custom SieMatic kitchen cabinets in Lotus White and solid quartz countertops
- Fully integrated Liebherr refrigerator and Bosch appliances
- Carrara marble honed mosaic floors by Specstones

450 HAYES

450 Hayes Street, San Francisco, CA 94102  
T 415 552 5800  
info@450hayes.com  
450hayes.com



1FT 5FT 10FT



# PH1

2 Bedrooms  
2 Baths  
Interior: Approximately 1,171 sq ft  
Exterior: Approximately 280 sq ft



EXCLUSIVELY REPRESENTED BY THE MARK COMPANY  
The developer reserves the right to make modifications in materials, pricing, specifications, plans, designs, scheduling and delivery of the homes without prior notice. All dimensions are approximate and subject to normal construction variances and tolerances. Plans and dimensions may contain minor variations from floor to floor. We reserve the right to make changes in accordance with the applicable offering plan. This is not an offer to sell, but is intended for information only. CalBRE#01527205  
Equal Housing Opportunity

DM DEVELOPMENT

